



Northeast Energy Efficiency Partnerships

Regional Energy Efficiency Database (REED)

How to Get the Most Out of this
Regional Energy Efficiency Resource

**REMINDER: YOU ARE CURRENTLY MUTED BY DEFAULT. PLEASE
ENTER YOUR AUDIO PIN SO THAT WE CAN UNMUTE YOU IF
YOU HAVE A QUESTION.**

Today's Agenda

- Welcome and introduction (10 mins)
- What's new? (20 mins)
- How NEEP uses REED (15 mins)
- How YOU can use REED (30 mins)
- What's on the horizon? (10 mins)
- Wrap up and next steps (5 mins)

REED Overview

The screenshot shows the REED website home page. At the top left is the neep logo. To its right is the title "REGIONAL ENERGY EFFICIENCY DATABASE" in green. On the top right, there are logos for the U.S. Department of Energy and Berkeley Lab, along with a "[Log In]" link. Below the header is a navigation menu with buttons for "Home", "Reports", "Glossary", "State Documents & Key Info", "Cost Effectiveness Screening", and "Energy Efficiency Forecasts". The main content area begins with a "Welcome to the Regional Energy Efficiency Database (REED)." section, followed by three paragraphs of introductory text and a contact email link.

neep REGIONAL ENERGY EFFICIENCY DATABASE

U.S. DEPARTMENT OF ENERGY BERKELEY LAB

[Log In]

Home Reports Glossary State Documents & Key Info Cost Effectiveness Screening Energy Efficiency Forecasts

Welcome to the Regional Energy Efficiency Database (REED).


REED serves as a dashboard for the consistent reporting of electric and natural gas energy efficiency program energy and demand savings and associated costs, avoided emissions, and job impacts across the Northeast and Mid-Atlantic region.

REED is a project of NEEP's [Regional Evaluation, Measurement and Verification Forum \(EM&V Forum\)](#) which is guided by a Steering Committee comprised of energy regulatory commissioners and air quality and state energy office directors and representatives from across the region. REED is based on the EM&V Forum's [Common Statewide Energy Efficiency Reporting Guidelines](#), which were adopted by the Forum Steering Committee in 2010. The Guidelines provide state-level reporting templates and process recommendations for improving the consistency of energy efficiency reporting across Forum jurisdictions.

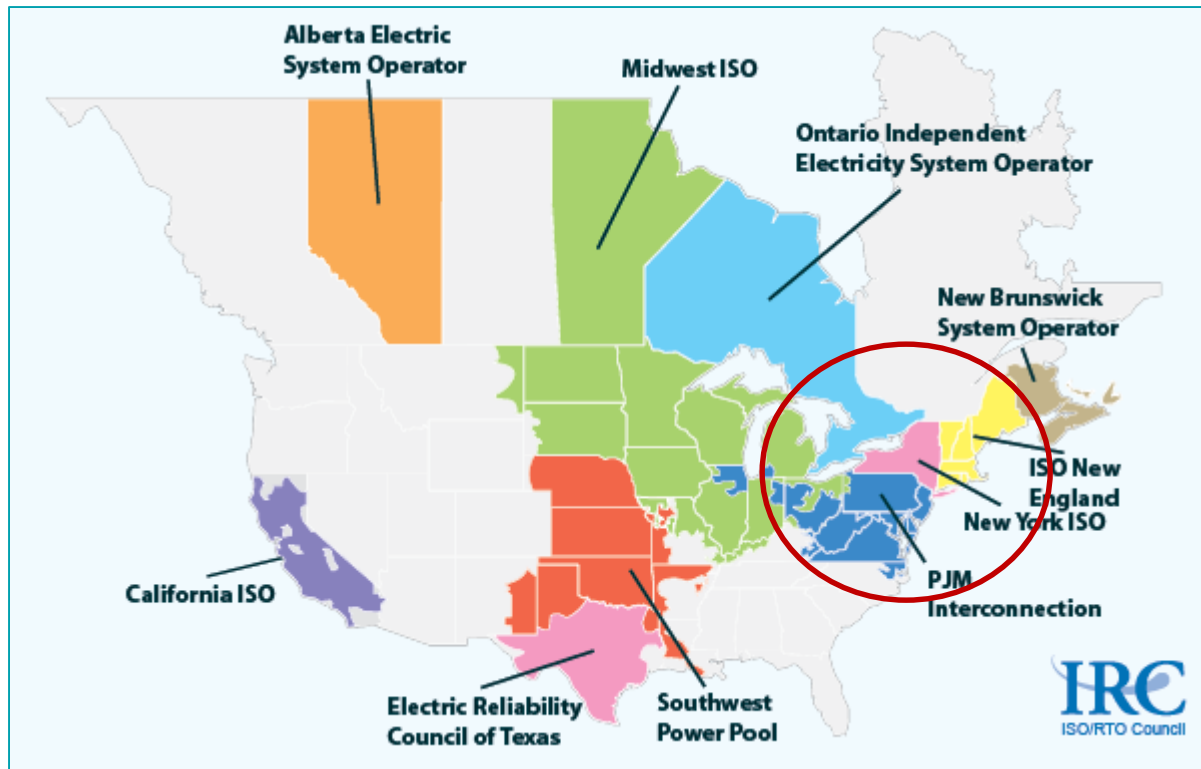
REED includes program year 2013-2011 energy efficiency data from the following ten states: Connecticut, Delaware, District of Columbia, Maine, Maryland, Massachusetts, New Hampshire, New York, Rhode Island and Vermont. The complementary [REED Program Year 2012 Annual Report](#) and [REED Program Year 2011 Annual Report](#) provide an overview of the high-level impacts of energy efficiency programs at the regional level as well as comparisons across states that help increase our understanding of similarities and differences in results across programs by type, sector and state.

If you have any questions or comments about REED please email REED Manager, Patrick Wallace, at reed@neep.org.

REED Overview

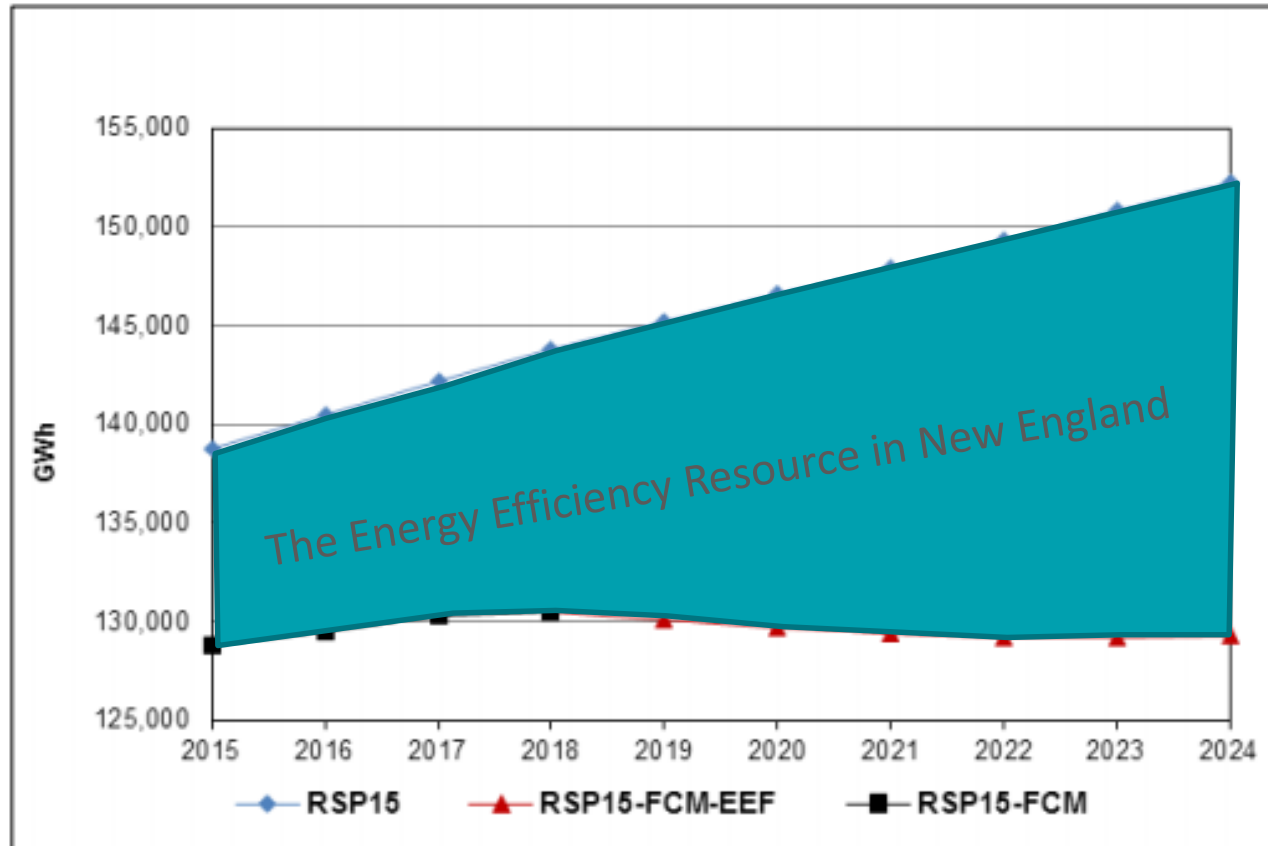
- **What is it?:** REED serves as a dashboard for the consistent reporting of electric and natural gas energy efficiency program energy and demand savings and associated costs, avoided emissions, and job impacts across the Northeast and Mid-Atlantic region.
- **REED's Purpose:** Develop transparency and consistency in reporting of EE impacts across the region in order to increase the credibility and understanding of the EE resource to support state and regional energy, economic and environmental policies.
- **Visit REED** at www.reed.neep.org  **New URL!**

REED Overview



Energy Planning in the Northeast and Mid-Atlantic is Regional

REED Overview



Consistency in EE reporting at regional level can support good planning


Poll Question



Have you been to
REED in the past six
months?



What's New?



 **REGIONAL ENERGY EFFICIENCY DATABASE**

[\[Log In \]](#)

[Home](#) | [Reports](#) | [Glossary](#) | [State Documents & Key Info](#) | [Cost Effectiveness Screening](#) | [Energy Efficiency Forecasts](#)

Welcome to the Regional Energy Efficiency Database (REED).

REED serves as a dashboard for the consistent reporting of electric and natural gas energy efficiency program energy and demand savings and associated costs, avoided emissions, and job impacts across the Northeast and Mid-Atlantic region.

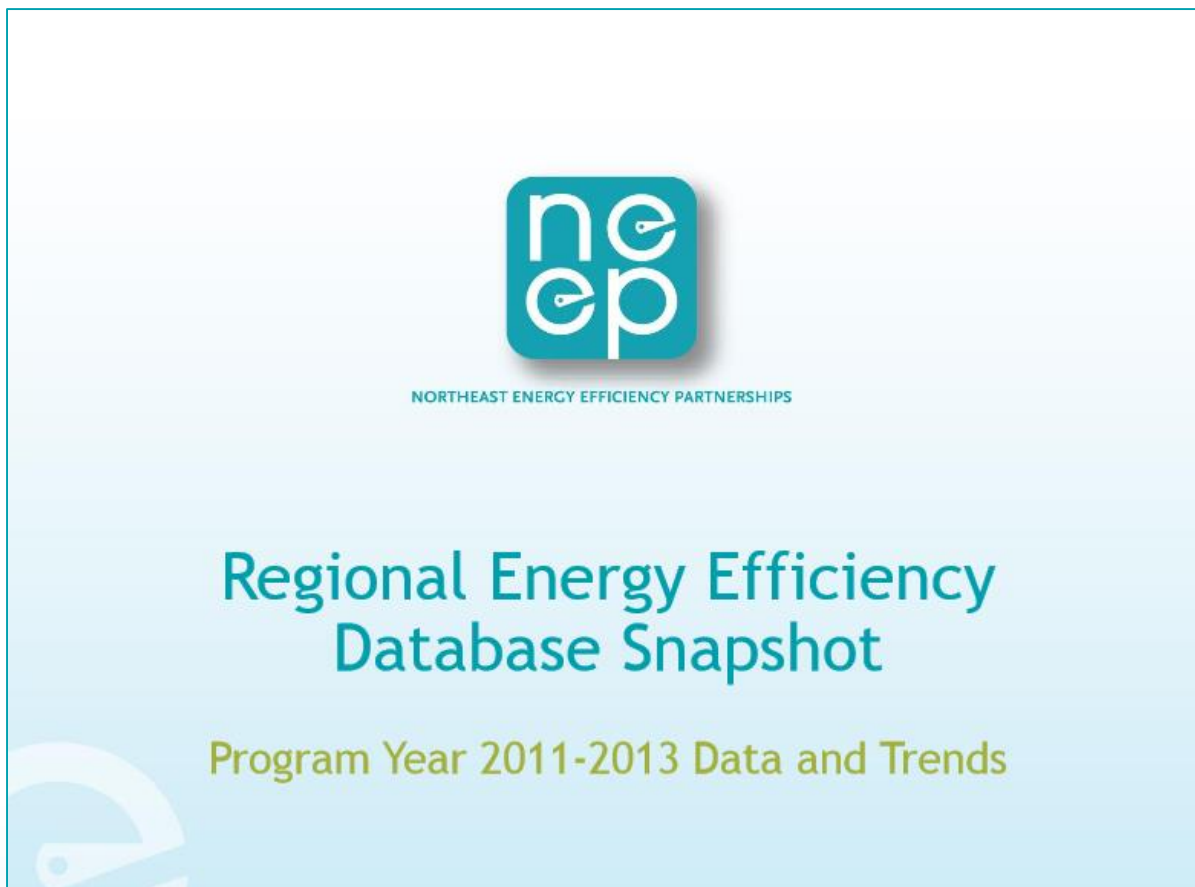
REED is a project of NEEP's [Regional Evaluation, Measurement and Verification Forum \(EM&V Forum\)](#) which is guided by a Steering Committee comprised of energy regulatory commissioners and air quality and state energy office directors and representatives from across the region. REED is based on the EM&V Forum's [Common Statewide Energy Efficiency Reporting Guidelines](#), which were adopted by the Forum Steering Committee in 2010. The Guidelines provide state-level reporting templates and process recommendations for improving the consistency of energy efficiency reporting across Forum jurisdictions.

REED includes program year 2013-2011 energy efficiency data from the following ten states: Connecticut, Delaware, District of Columbia, Maine, Maryland, Massachusetts, New Hampshire, New York, Rhode Island and Vermont. The complementary [REED Program Year 2012 Annual Report](#) and [REED Program Year 2011 Annual Report](#) provide an overview of the high-level impacts of energy efficiency programs at the regional level as well as comparisons across states that help increase our understanding of similarities and differences in results across programs by type, sector and state.

If you have any questions or comments about REED please email REED Manager, Patrick Wallace, at reed@neep.org.

How NEEP Uses REED

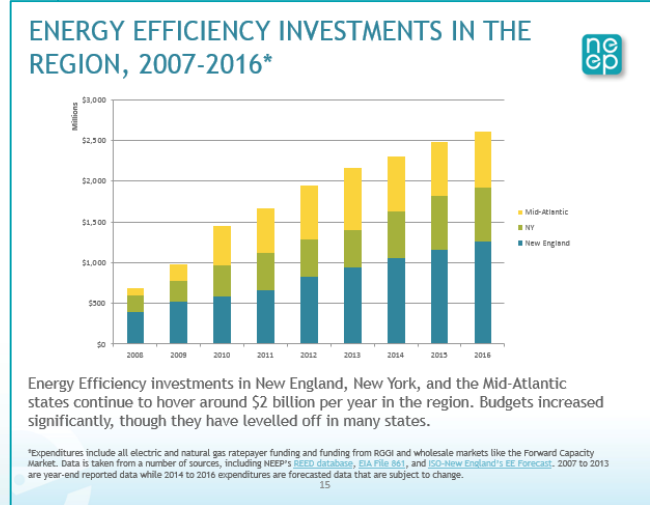
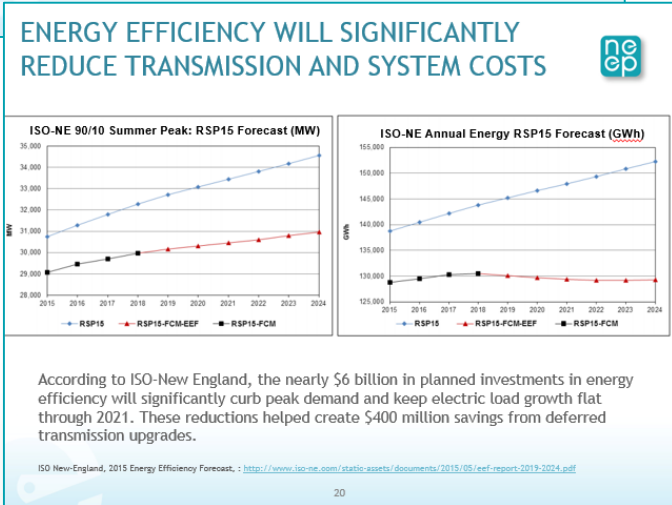
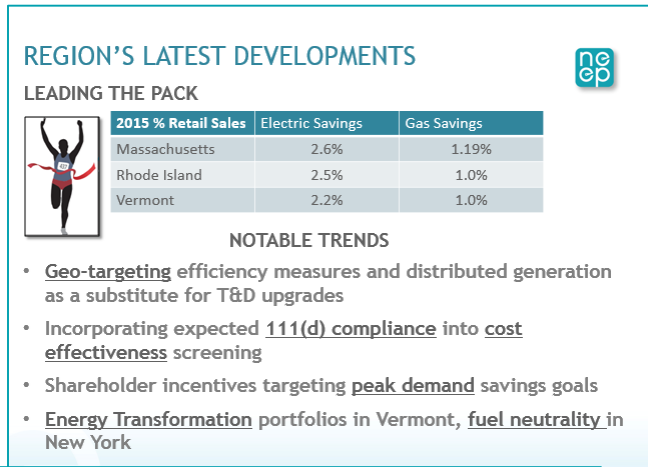
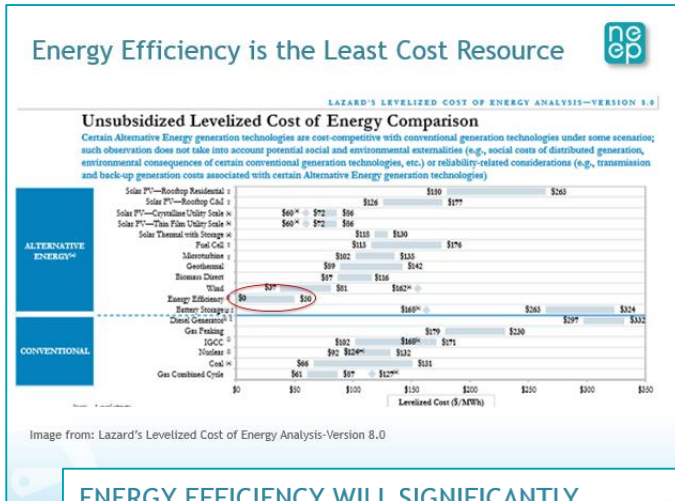
REED Snapshot



The full REED Snapshot can be found [here](#).

How NEEP Uses REED

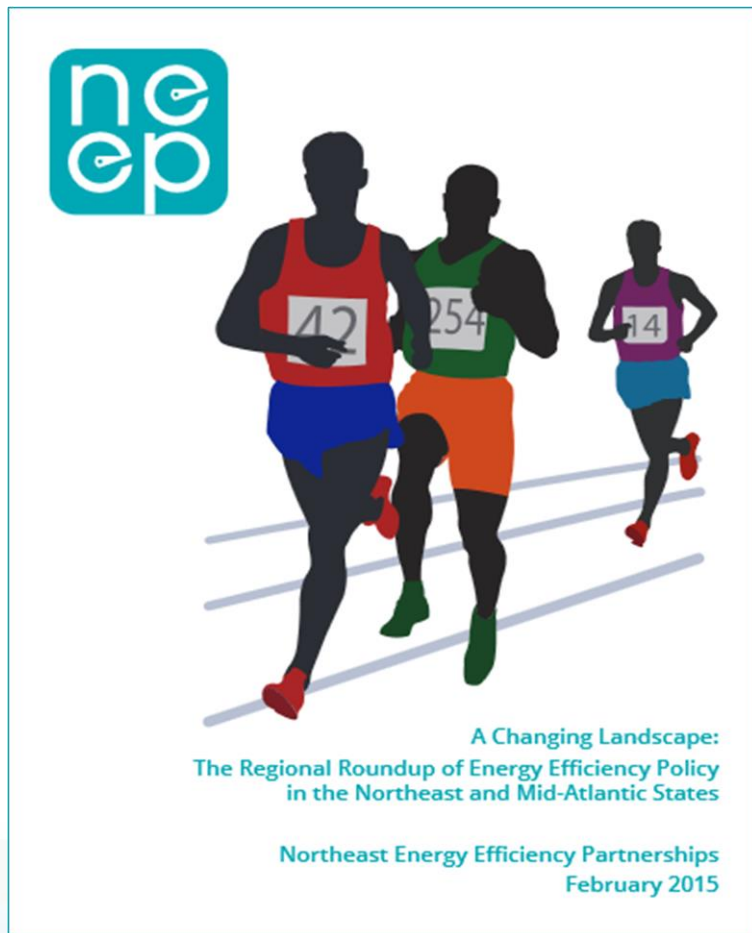
Energy Efficiency Policy Snapshot



The full Energy Efficiency Policy Snapshot can be found [here](#).

How NEEP Uses REED

Regional Roundup of Energy Efficiency Policy



At a Glance

Electric Program Expenditures	\$121,612,253.44
Gas Program Expenditures	\$25,010,456.00
Per Capita Expenditures	\$40.77
Electric Savings (MWh)	266,364
Electric Savings as a Percent of Retail Sales	0.96%
Gas Savings (Therms)	4,812,815
Gas Savings as a Percent of Retail Sales	0.39%

Footnotes: 2013 program year data as reported to ISO-New England for its 2014 Energy Efficiency Forecast and to the NEEP EM&V Forum for the Regional Energy Efficiency Database (REED). Savings are expressed in net annual terms.

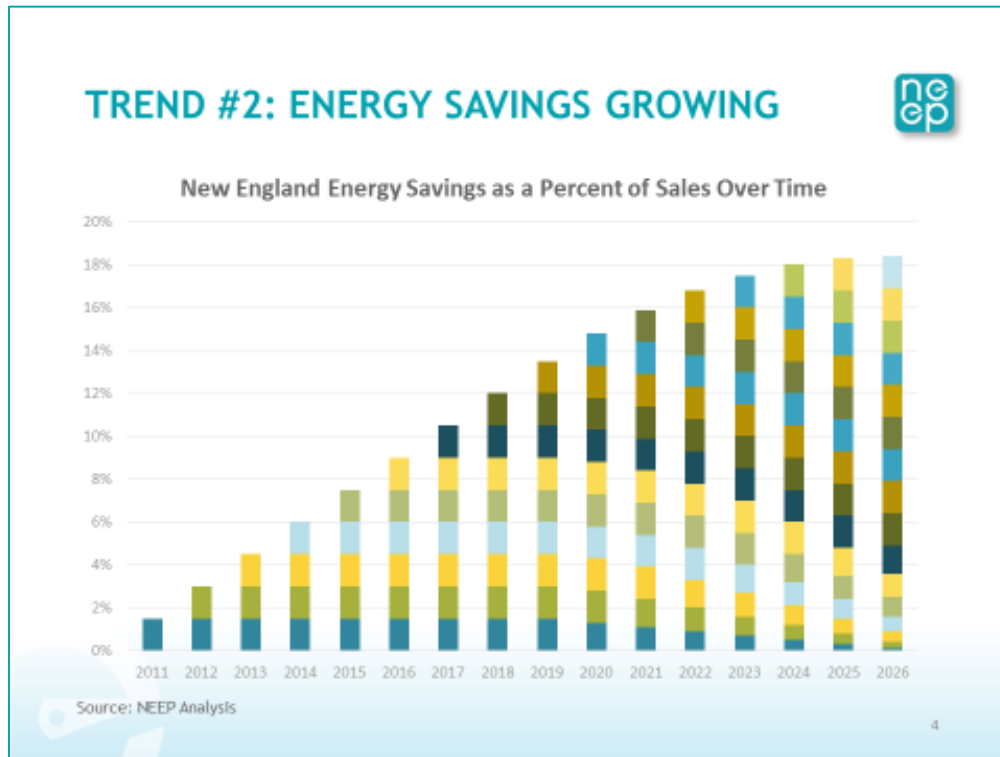
The full Regional Roundup report can be found [here](#).

How NEEP Uses REED

- REED Snapshot
 - Just the data in REED
 - High level trends over time
 - REED “Executive Summary”
- Efficiency Policy Snapshot
 - Short PowerPoint on EE policy by the numbers
 - Puts numbers in a broader policy context
 - Includes basic info on EE policies by state and makes case for EE
- Regional Roundup of EE Policy
 - NEEP’s annual assessment report on EE policy in the region
 - Offers comparative analysis of investment levels and savings
 - Addresses challenges and opportunity for EE in the region
 - Addresses key public policy issues for EE across the region

How NEEP Uses REED

Presentations, Comments, Blogs



How NEEP Uses REED

State of Our Sockets



THE STATE OF OUR SOCKETS: A REGIONAL ANALYSIS OF THE RESIDENTIAL LIGHTING MARKET

Northeast Energy Efficiency Partnerships, August 2015

Primary Authors: Claire Miziolek, Patrick Wallace, and David Lis

Residential lighting has long been a centerpiece of ratepayer-funded energy efficiency program portfolios. In New England, residential lighting measures have produced over 30 percent of all efficiency program savingsⁱ (Figure 1). The large savings potential along with straightforward nature of replacing lightbulbs in sockets makes residential lighting the classic low hanging fruit. So it comes as no surprise that since the late 1980s, program administrators from Maine to Maryland have designed and implemented large programs that educate consumers on new products, leverage the latest in lighting technology, target hard-to-reach customer segments, save consumers money, and lower carbon emissions.

Even though residential lighting makes up a significant portion of efficiency program portfolios, the lighting market as a whole is in a state of flux. Program administrators, public utility commissions, state energy offices, and others are asking key questions:

- Has the residential lighting market been transformed?
- Where is the market headed? What impacts will EISA 2020 have?
- Is there a role for residential lighting programs in the current environment? What are the short-term and long-term priorities?

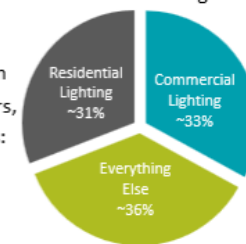


Figure 1: Total Program Savings

The full State of our Sockets brief can be found [here](#), and [register](#) for the webinar on August 27th today!

How NEEP Uses REED

More Residential Lighting Analysis



2015 NORTHEAST
RESIDENTIAL
LIGHTING WORKSHOP

Location:

OSRAM SYLVANIA – LIGHTPOINT
100 Endicott Street
Danvers, MA 01923

Date:

Thursday, October 1, 2015



Regional Differences: Evaluation Findings from REED

- A presentation and discussion of regional evaluation inputs based on research from the Regional Energy Efficiency Database (REED). States throughout the region are making different claims on Delta Watts saved, hours of use operated, measure lives, and more. We will discuss these differences and assess the opportunity for better alignment.

View the agenda and register for the workshop [here](#).

How NEEP Uses REED

Questions?



Today's Agenda

- Welcome and introduction (10 mins)
- What's new? (20 mins)
- How NEEP uses REED (15 mins)
- How YOU can use REED (30 mins)
- What's on the horizon? (10 mins)
- Wrap up and next steps (5 mins)

How You Can Use REED

How much do states
typically spend on
EM&V?

How You Can Use REED

How has the peak to energy ratio from EE programs changed over the last three years in New England?

How You Can Use REED

How much did states save
in average annual CO₂
emissions in 2013?

How You Can Use REED

Which states spent the most on a \$/MWh basis and who spent the least?

Starting Point for Deeper Questions and Analysis

How You Can Use REED

Questions?



Today's Agenda

- Welcome and introduction (10 mins)
- What's new? (20 mins)
- How NEEP uses REED (15 mins)
- How YOU can use REED (30 mins)
- What's on the horizon? (10 mins)
- Wrap up and next steps (5 mins)

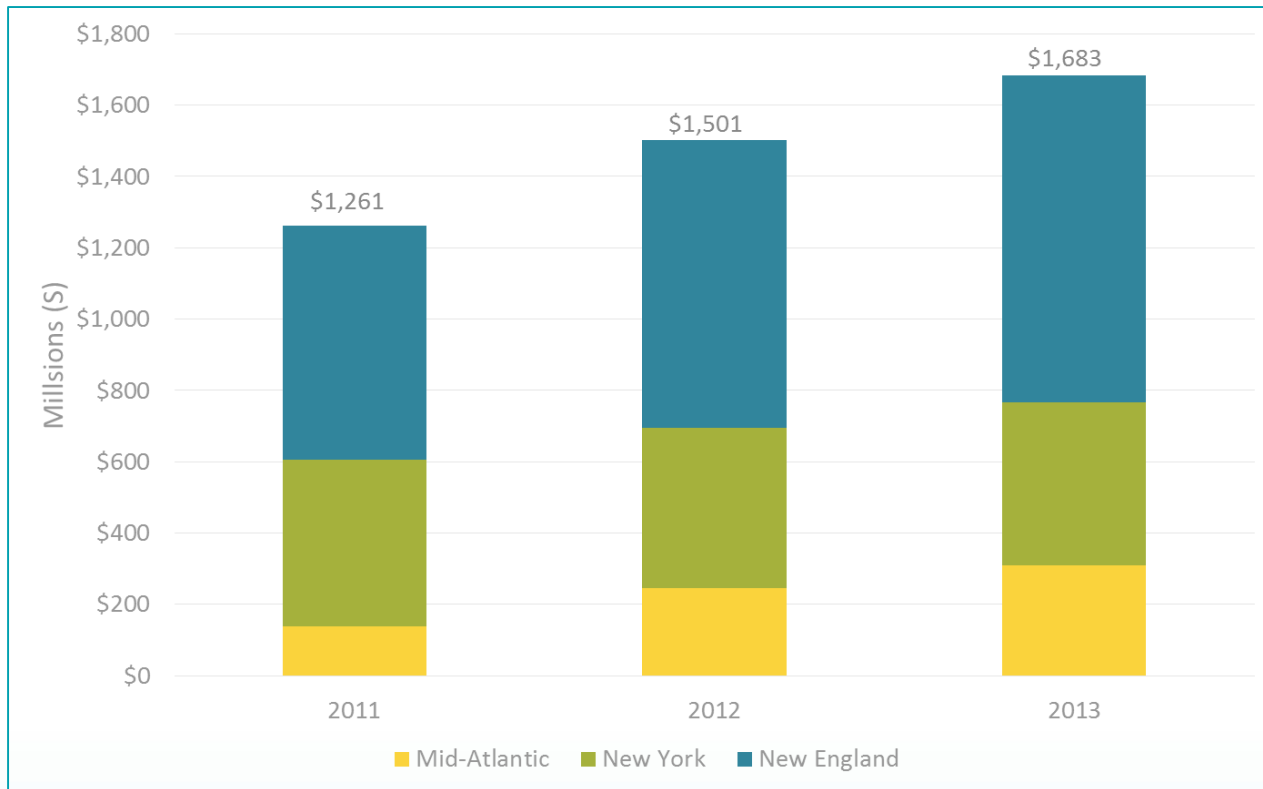
What's on the Horizon?

More Deeper Analysis



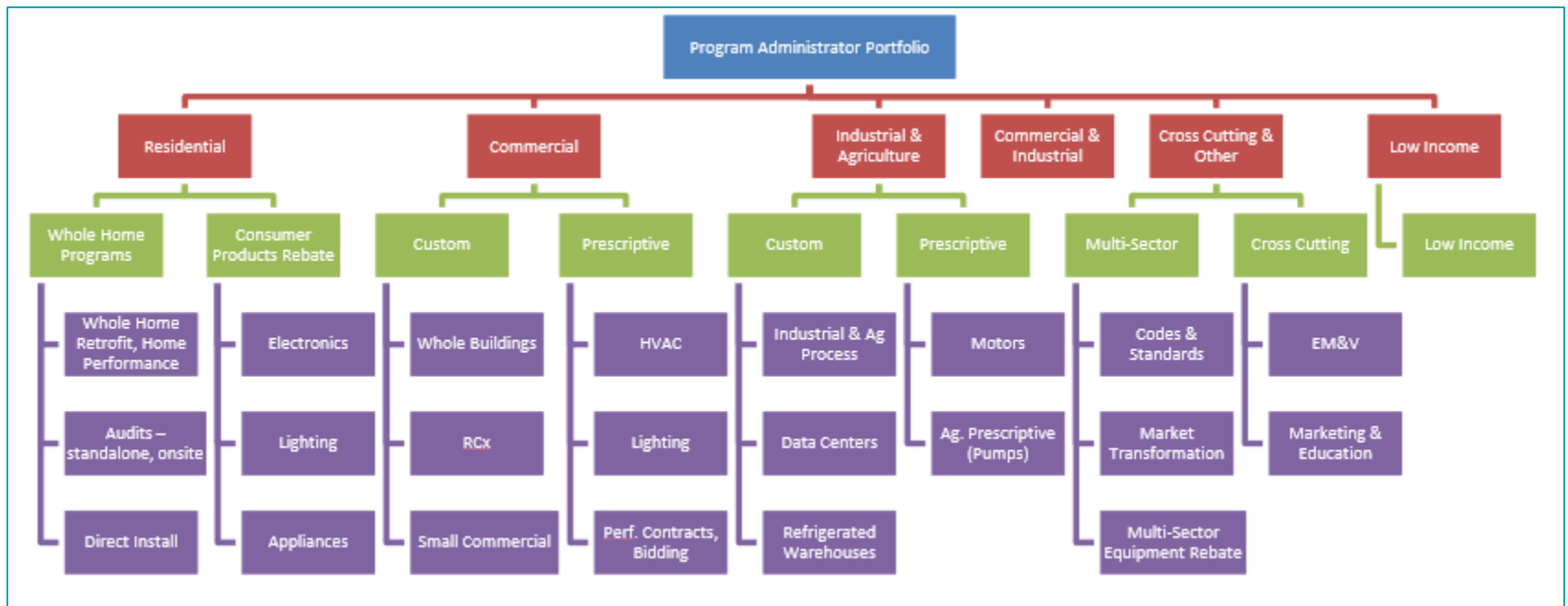
What's on the Horizon?

REED Upgrades: Trends



What's on the Horizon?

REED Upgrades: Program Typology



What's on the Horizon?

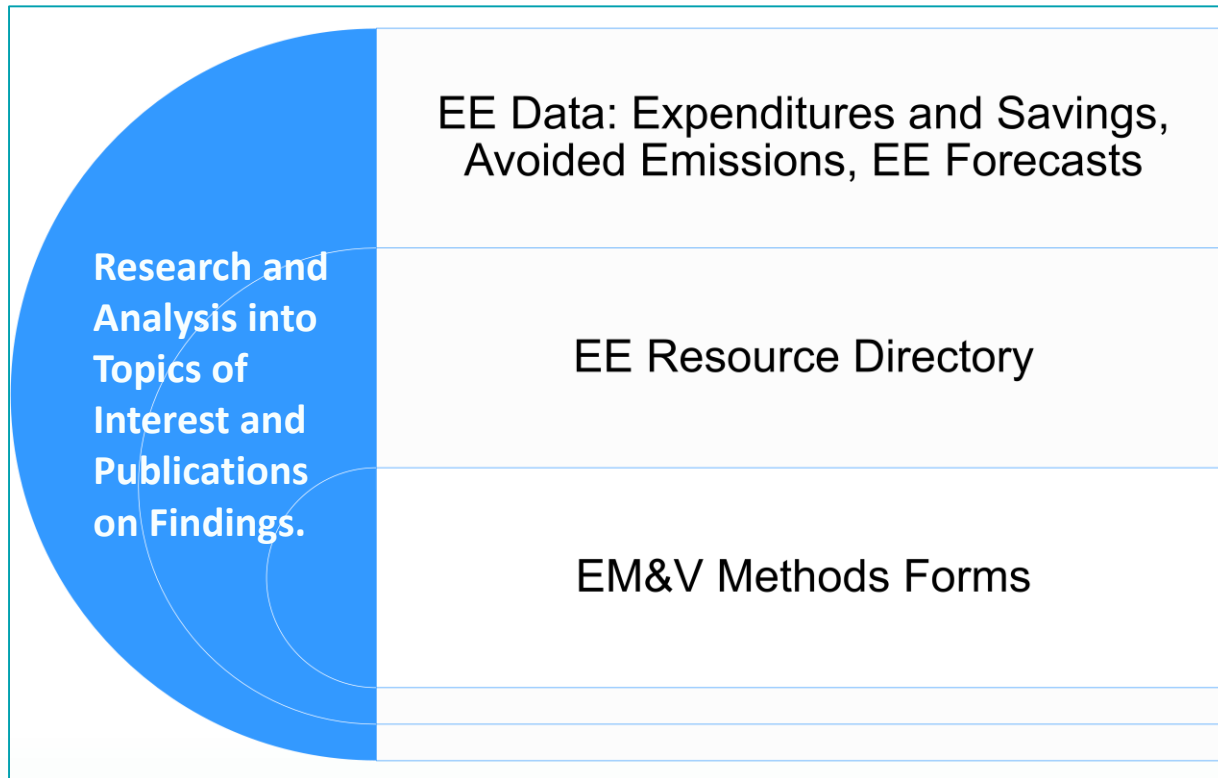
REED Upgrades: Air Quality Module

All units are in lbs.	Avoided CO ₂	Avoided NO _x	Avoided SO _x
Connecticut	190,445,065	93,918	83,484
Delaware	155,612,136	132,124	342,053
District of Columbia	52,762,745	44,799	115,979
Maryland	1,131,481,071	960,691	2,487,123
Massachusetts	1,003,008,796	494,634	439,675
New Hampshire	46,683,098	23,022	20,463
New York	928,062,181	109,825	130,671
Rhode Island	147,280,338	72,630	64,561
Vermont	77,087,413	38,016	33,793
Total	3,732,422,842	2,958,659	4,893,843

More robust resources for air regulators trying to incorporate energy efficiency into state implementation plans

What's on the Horizon?

REED Upgrades: Integrate EM&V Methods Forms



What's on the Horizon?

Program Year 2014 Data Collection Starting Up Soon

Program Year 2014 Data Collection Schedule	
September 23rd	NEEP sends REED data request to each state
By October 31 st	<p>State contacts fill out Excel-based data collection forms and email back to Patrick Wallace at pwallace@neep.org:</p> <ul style="list-style-type: none"> • Table 1: Background EE Information • Table 2: Savings and Expenditures (<i>New England states to provide natural gas program data only, other states to provide both electric and natural gas program data</i>) • Table 3: Program Funding • Table 5: Job Impacts • Table 6: Cost Effectiveness <p>NEEP will be filling out Table 4: Cost of Saved Energy, based on the data states provide in Table 2.</p>
November	NEEP does QC on data provided by states and contacts state contacts with questions if necessary
December 17 th	Electric program data for New England states provided by ISO-NE
January	NEEP does QC on data provided by ISO-NE and contacts state contacts with questions if necessary
By January 31 st	NEEP QC process complete; Program Year 2014 data publicly available on REED website

What's on the Horizon?

Questions?



Today's Agenda

- Welcome and introduction (10 mins)
- What's new? (20 mins)
- How NEEP uses REED (15 mins)
- How YOU can use REED (30 mins)
- What's on the horizon? (10 mins)
- Wrap up and next steps (5 mins)

Wrap up



ACEEE National Conference on Energy Efficiency as a Resource

Statehouse Convention Center
Little Rock, AR
September 20, 2015 to September 22, 2015

[Program](#) | [Registration](#) | [Accommodations](#) | [Past EER Conferences](#)

2015 Sponsors

Gold

